

# 20 NORTH ORANGE

20 North Orange | Orlando, Florida



OFFICE SPACE  
**FOR LEASE**

**20**  
NORTH ORANGE

Corner of Downtown Orlando's "Main and Main"

Owned & Operated by:  
**Steelbridge**

# AVAILABLE SPACE

Suite	RSF
350	3,509
600	4,145
704*	1,403
705*	3,246
706*	2,931
710*	1,767
8th Floor	15,547
1300	3,568



## Office Leasing Inquiries

Yvonne Baker  
Regional Managing Partner  
Phone 407.458.5408  
E-mail Yvonne.Baker@FranklinSt.com

Katherine Zelman  
Senior Associate  
Phone 407.458.5412  
E-mail Katherine.Zelman@FranklinSt.com

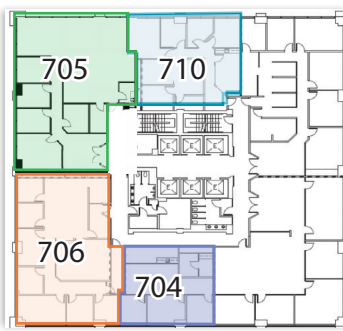




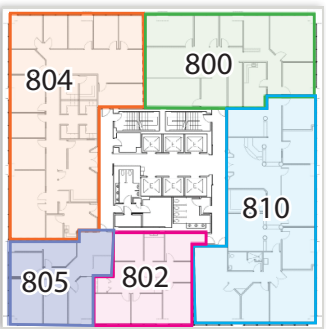
Third Floor



Sixth Floor



Seventh Floor



Eighth Floor



Thirteenth Floor

\*704, 705, 706 & 710 are contiguous for a total of 9,347 SF.

8th Full Floor  
1,601 SF to 15,547 SF

Owned & Operated by:  
**Steelbridge**

# EXPLORE 20 NORTH ORANGE

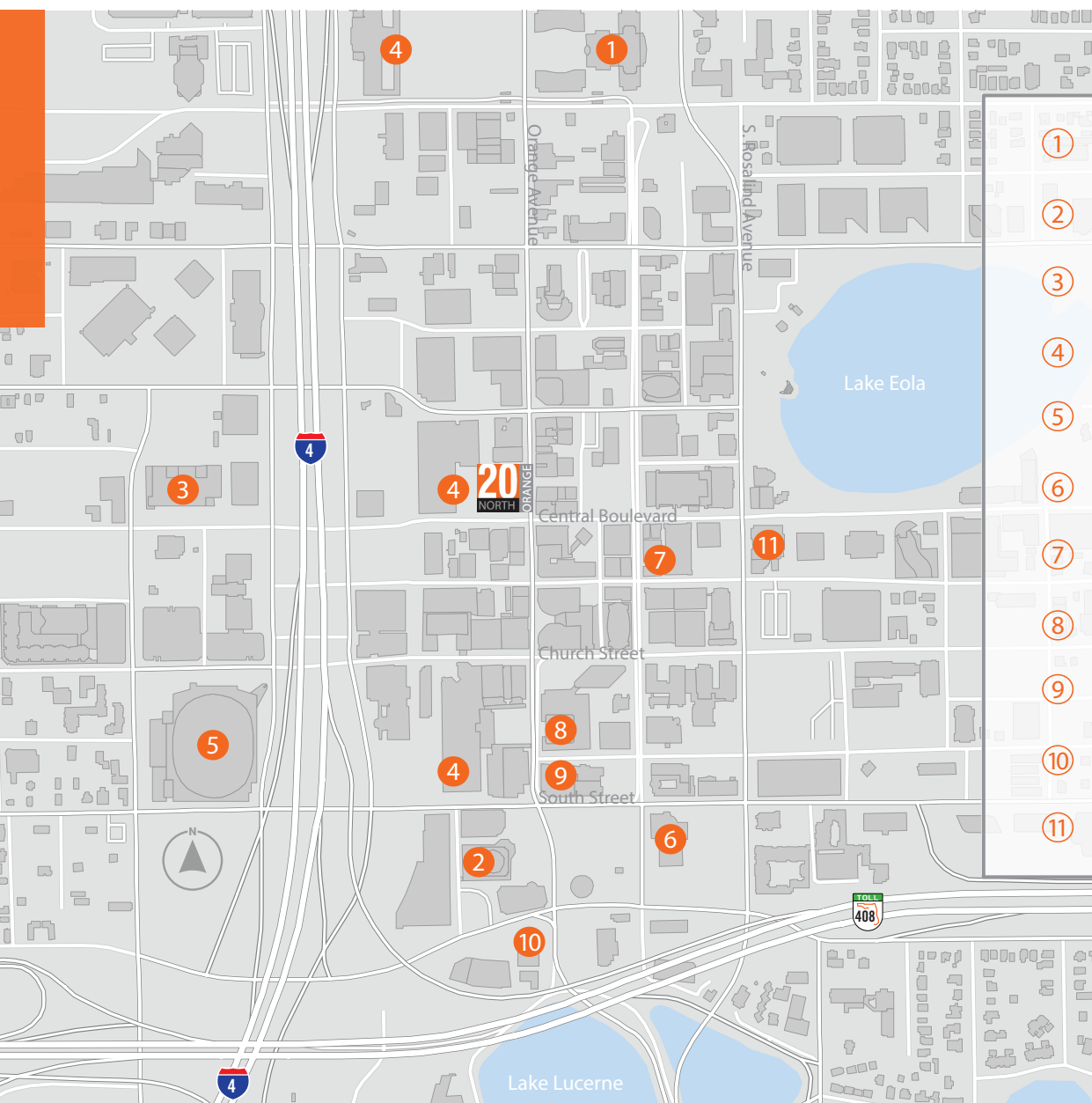
- » 276,868+ SF CBD Office Building
- » Renovation/redesign of main lobby and 2nd floor common area
- » Ground floor retail featuring Pokeworks and Mecato's Cafe
- » Two attached parking garages with covered skybridges

- » Proximate to city garages on Central, Washington and Jefferson
- » On-site property management, 24/7 security guard staffing and after hours card access
- » Café, full-service banking, ATM and car-detailing



Click here to view property

**DRONE VIDEO**



- |   |                          |
|---|--------------------------|
| ① | Orange County Courthouse |
| ② | Orlando City Hall        |
| ③ | US Federal Courthouse    |
| ④ | SunRail Station(s)       |
| ⑤ | Amway Arena              |
| ⑥ | Dr Phillips Performing   |
| ⑦ | Arts District            |
| ⑧ | Citrus Club              |
| ⑨ | Grand Bohemian Hotel     |
| ⑩ | Aloft Hotel              |
| ⑪ | Embassy Suites Hotel     |

Conveniently located within walking distance to CBD government buildings, entertainment venues and hotels



# PROPERTY HIGHLIGHTS

- » Easy accessibility to all major thoroughfares, including I-4 and SR 408
- » Lymmo and Lynx transportation along Orange Avenue



20 North Orange was recognized by BOMA as The Building of the Year in the Renovated Building category.



**18,783**

Total Businesses



**\$58,294**

Average HH Income



**36,800**

Daytime Population



**40.2**

Average Age



**258,188**

Total Employees



Owned & Operated by:

**Steelbridge**

## Office Leasing Inquiries

Yvonne Baker  
Regional Managing Partner

Phone 407.458.5408

E-mail [Yvonne.Baker@FranklinSt.com](mailto:Yvonne.Baker@FranklinSt.com)

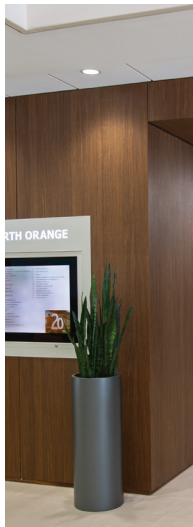
Katherine Zelman  
Senior Associate

Phone 407.458.5412

E-mail [Katherine.Zelman@FranklinSt.com](mailto:Katherine.Zelman@FranklinSt.com)



# 1ST & 2ND FLOOR LOBBY AREAS

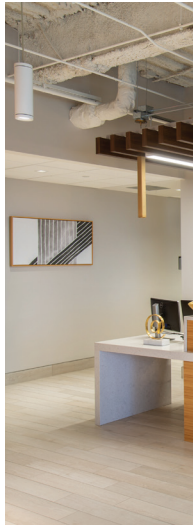








# SUITE INTERIORS









## ABOUT

### 20 NORTH ORANGE

20 North Orange is under a quality of ownership that possesses a depth of real estate experience along with significant financial capacity to deliver what is promised.

We have wrapped up exciting renovations to practically the entire Building – modernizations throughout and repositioning the appearance with new streetscaping and retail offerings. As an additional significant benefit, 20 North Orange is strategically situated within one block of multiple City of Orlando parking garages providing convenient access for additional parking like no other office building.

Capitalizing on the resurgence of the entire Orlando CBD and the significant upgrades by ownership, this iconic Building is back to its rightful place of prominence, with an unsurpassed location at the corner of Orange and Central – “Main and Main”.

### 20 NORTH ORANGE

Orlando, Florida

---

#### Office Leasing Inquiries

Yvonne Baker  
Regional Managing Partner  
407.458.5408  
[Yvonne.Baker@FranklinSt.com](mailto:Yvonne.Baker@FranklinSt.com)

Katherine Zelman  
Senior Associate  
407.458.5412  
[Katherine.Zelman@FranklinSt.com](mailto:Katherine.Zelman@FranklinSt.com)

[www.20NOrange.com](http://www.20NOrange.com)



20 North Orange was recognized by BOMA as The Building of the Year in the Renovated Building category.

Owned & Operated by:

**Steelbridge**